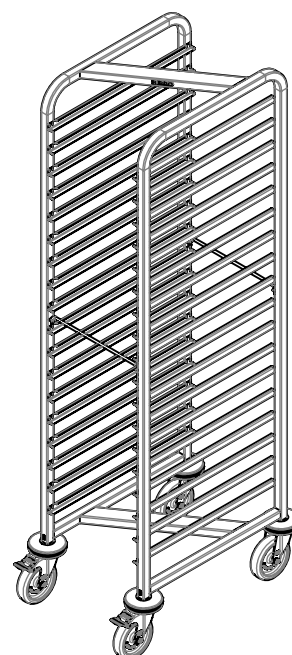
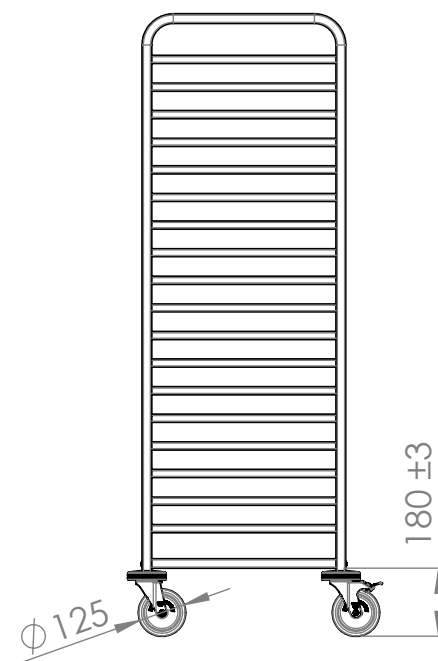
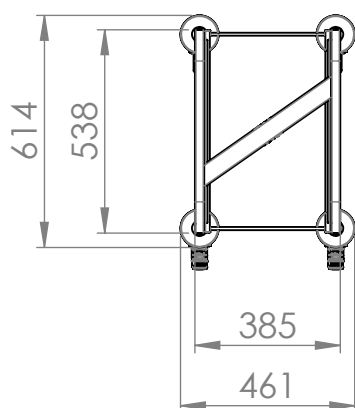



© Diese Zeichnung darf ohne unsere Einwilligung weder vervielfältigt, noch dritten Personen vorgelegt oder ausgehändigt werden.



Castors: zinc-plated  
Capacity: 18 GN 1/1 or 36 GN 1/2  
Load capacity: 200kg

1												
Index	Rev.-No.	Description of modification						Date		Name		
<b>B.PRO</b>		Scale	M 1:20	Group	110	Status	freigegeben	Document type	KDI	Std. paper-size	A4	
			Material					Surface				
Tolerances according to ISO 2768-cL			Date	Name		Document item-no. 2000330197.01						
		Drawn	05.11.2025	BeiselM		SAP material-no. 00575643						
		Checked	12.11.2025	KüblerD								
		Approved	12.11.2025	KüblerD								
Origin		Description										
		RWRR 160										
Notice:								2000330162	Sheet	1	of 1	